

Acer Projector Gateway

Introduction

The Acer Projector Gateway (APG) is a smart, integrated system that enhances presentations via your Acer projector. The APG provides versatile source connectivity, the latest eDisplay Management tools for networking display, supports for media contents playback via the built-in decoder and more.

Networking APG features

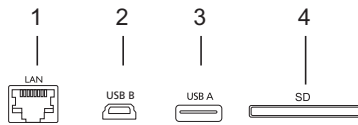
- With high-performance wireless projection via an acer USB WiFi adapter or an RJ-45 port for wired connections (only for the models with RJ-45 port).
- The projector can act as an access point (AP) or work in Client mode when doing networking display.
- Users can easily launch the Acer eDisplay Management to do Full screen, L/R, 4-split screen projection and enable high quality video streaming.
- Powerful wireless display features ready for devices with different OS (MS Windows, Mac OS, Android, iOS)
- Supports wireless network security (WPA-PSK, WPA2-PSK).
- Acer Projector Gateway Web Management enables a web-based control of Acer projector for Windows NB/PC (only when the projector is in AP mode).
- Supports firmware upgrade via USB handy drive.
- Crestron compliant (only for the models with RJ-45 port).

Multi-media features

- Fancy and stylish user interface for better experience.
- You can enjoy media & documents playback via internal memory, USB handy drive and SD card (for selected models).
- Supports high resolution JPEG and BMP picture formats, slideshow and various slideshow effects for the best viewing experience.
- Supports MP3, PCM and WMA...audio formats, music spectrum and random play function for your pleasing.
- Supports MPEG4, H.264, WMV, MKV and RMVB...video formats and smooth video playback with 1080p@30Hz.
- Supports office documents playback (Word, Excel, Powerpoint, PDF).
- Easy control for all media functions by the remote control.
- DLNA compliant. You can enjoy connectivity with other DLNA devices if under the same local area network environment.
- You can mirror or extend your screen via the source USB B.

Getting Started

Connecting multi-media device to the projector



#	Component	Description
1	LAN port	Connects to an Ethernet 10/100-based network.
2	Mini USB	Projects NB/PC screen via mini USB (USB B).
3	USB Type A	Connects to USB flash drive for multimedia playback. Or connects to a USB Wi-Fi adapter (optional).
4	SD card slot (for selected models)	Insert the SD card for multimedia playback.

To switch between different inputs, press SOURCE on the projector or remote control to open the Source menu that allows you to select an input signal source.



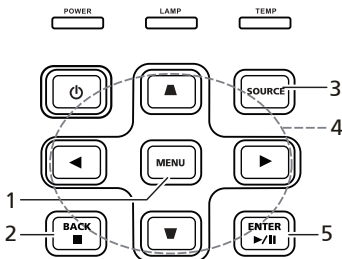
Copyright © 2013. Acer Incorporated.
All Rights Reserved.


Changes may be made periodically to the information in this publication without obligation to notify any person of such revisions or changes. Such changes will be incorporated in new editions of this manual or supplementary documents and publications.

This company makes no representations or warranties, either expressed or implied, with respect to the contents hereof and specifically disclaims the implied warranties of merchantability or fitness for a particular purpose.

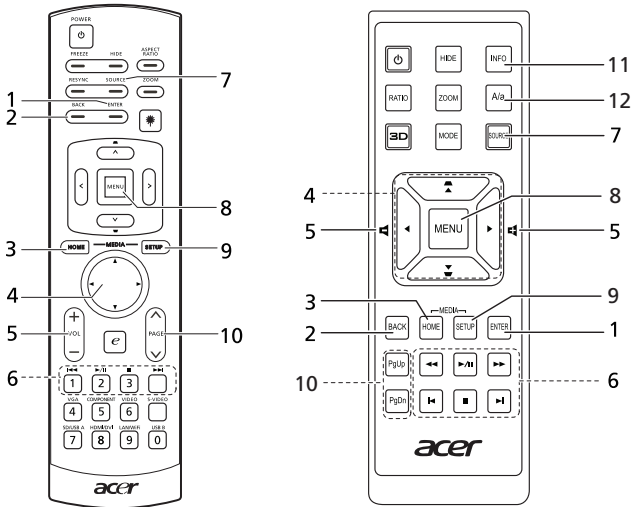
Control Panel and Remote Control



Control Panel




#	Function	Description
1	MENU	Launches the projector Onscreen Display (OSD) menu.
2	BACK ■ Stop	Cancels your selection, or goes back to previous page. Stops the playing media files.
3	SOURCE	Press to open the Source menu that allows you to select an input signal source. 
4	Four directional selection keys	Selects the media files in four directions.
5	ENTER ▶/ Play/Pause	Confirms your selection of items. Plays/Pauses the playing media files.

Remote Control



#	Function	Description
1	ENTER	Confirms your selection of items.
2	BACK	Cancels your selection, or goes back to previous page.
3	MEDIA HOME	Goes to MEDIA HOME page.  NOTE: This button is only available when the input signal is MEDIA.
4	 Four directional select pad	Selects the media files in four directions.
5	VOL +/-	Increases/decreases the volume.

#	Function	Description
6	⏮ Rewind	<ul style="list-style-type: none"> Goes to the previous file. Rewinds the playing media files with a long press for 3 seconds.
	▶/⏸ Play/Pause	Plays/Pauses the playing media files.
	■ Stop	Stops the playing media files.
	▶▶ Fast-forward	<ul style="list-style-type: none"> Goes to the next file. Fast-forwards the playing media files with a long press for 3 seconds.
	⏪ Previous	Goes to the previous file.
	⏩ Next	Goes to the next file.
	⏮ Rewind	Rewinds the playing media files.
	▶▶ Fast-forward	Fast-forwards the playing media files.
7	SOURCE	<p>Press to open the Source menu that allows you to select an input signal source.</p> 
8	MENU	Launches the projector Onscreen Display (OSD) menu.
9	MEDIA SETUP	Opens MEDIA SETUP page.
10	PAGE ^/v PgUp/PgDn	For computer mode only. Use the button to select the next or previous page. This function is only available when connected to a computer via a USB cable.
11	INFO	Displays information of the selected file.
12	A/a	Launches the projector OSD subtitle menu during video playback.

Media Mode



This mode allows you to browse media files stored in different devices, such as RAM (internal memory), USB handy drive, USB hard drive and SD card (for selected models) when connected to the projector. No matter where you are, you can always press MEDIA HOME to go back to MEDIA HOME page.

Adjust projector source to MEDIA.



.....
NOTE: Document mode is an optional function.



.....
NOTE: Supported capacity for USB handy drive: up to USB 3.0 64GB, for USB hard drive: up to 1TB.



.....
NOTE: Supported capacity for SD/SDHC/MicroSD: up to 64GB Class 2-10.



.....
NOTE: Some external USB hard drives may not be supported due to lack of USB power.

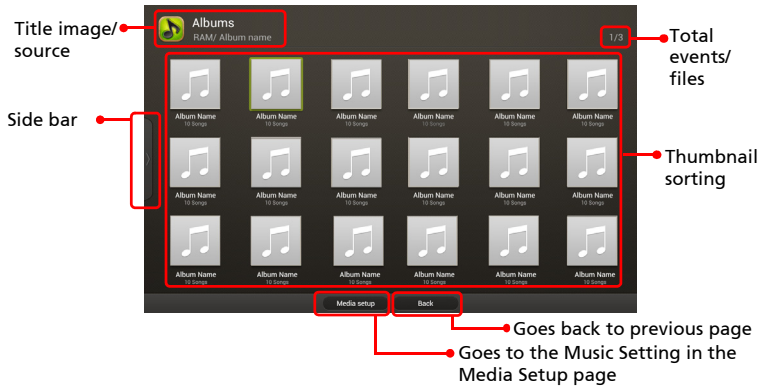


.....
NOTE: Disks with partitions are not supported.



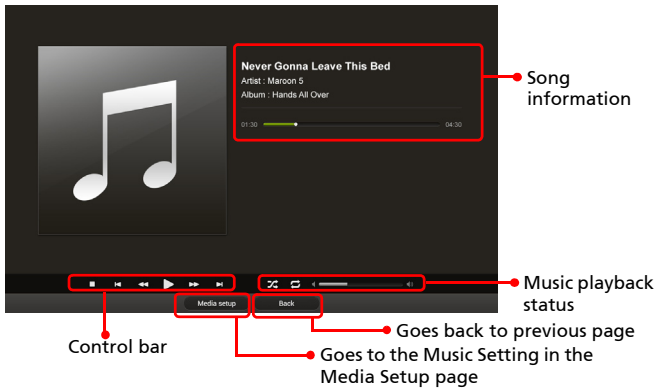
Music

When viewing music files



You can press the four directional selection keys to select the album and press ENTER to access. To use the side bar, press ◀ repeatedly until it displays and you can browse files by albums/artists/genres/songs.

When playing music



You can press ◀/▶ to adjust the volume. To select the backward/fast-forward speed, press the Rewind/Fast-forward key repeatedly. For details on the Music setting, see "Music Setting".



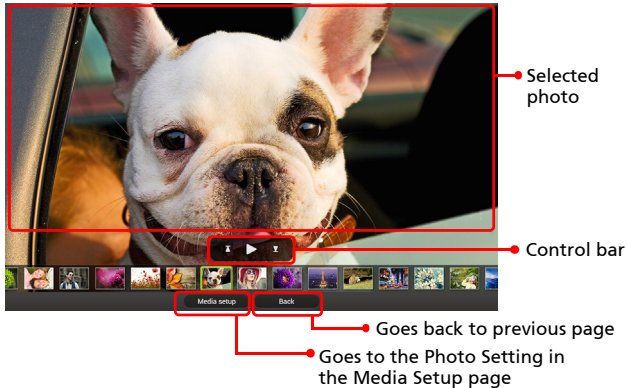
Photo

When viewing photos



You can press the four directional selection keys to select the file and press ENTER to access. To use the side bar, press ◀ repeatedly until it displays and you can browse files by events/photos.

When playing photos

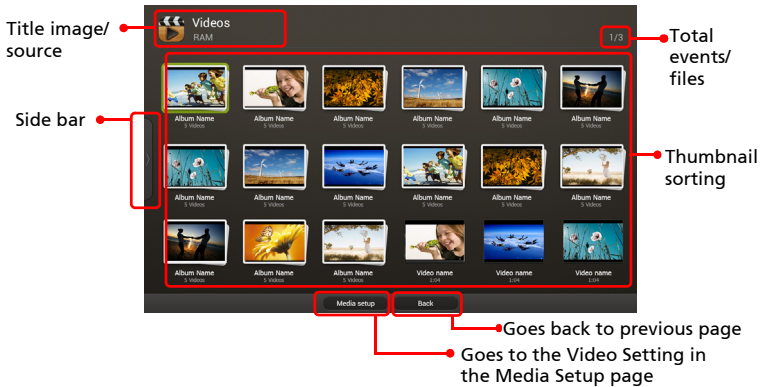


You can press ▶ to start a slideshow in full screen. Music playback is allowed during a slideshow. You can press ◀/▶ to adjust the volume. For details on the Photo Setting, see "Photo Setting".



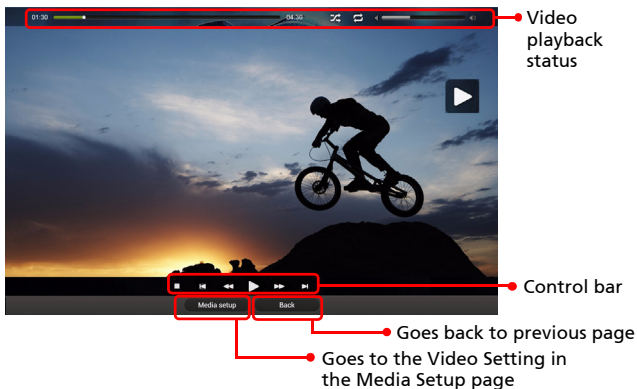
Video

When viewing video files



You can press the four directional selection keys to select the file and press ENTER to access. To use the side bar, press ◀ repeatedly until it displays and you can browse files by collections/videos.

When playing videos



You can press ◀/▶ to adjust the volume. To select the backward/fast-forward speed, press the Rewind/Fast-forward key repeatedly. To display the subtitle, you can press A/a on the remote control (if available) to trigger the projector OSD subtitle menu. For details on the Video Setting, see "Video Setting".



Document (optional)

When viewing document files

The screenshot shows a document viewer interface with the following elements:

- Title image/source:** Points to the 'Powerpoint RAM' header and icon.
- Side bar:** Points to the left edge of the document list.
- Total events/files:** Points to the '1/3' indicator in the top right corner.
- list sorting:** Points to the table headers: 'File name', 'Date', 'Type', and 'File size'.
- Media setup:** A button at the bottom left.
- Back:** A button at the bottom right.
- Functionality:**
 - 'Media setup' goes to the Document Setting in the Media Setup page.
 - 'Back' goes back to the previous page.

File name	Date	Type	File size
Folder name	2012/06/20, PM6:26	Folder	1 MB
Folder name	2012/06/20, PM6:26	Folder	1 MB
Folder name	2012/06/20, PM6:26	Folder	1 MB
File name	2012/06/20, PM6:26	PowerPoint	1 MB
File name	2012/06/20, PM6:26	PowerPoint	1 MB
File name	2012/06/20, PM6:26	PowerPoint	1 MB

You can press ▲/▼ to select the file and press ENTER to view it. To use the side bar, press ◀ repeatedly until it displays and you can browse files by document file formats. Button operations are different when viewing different types of documents.

For details on the Document Setting, see "Document Setting".



NOTE: Office Reader:

- 1 All IPR, including but not limited to copyright, in the Picisel Products is owned by Picisel suppliers.
- 2 The End User may not:
 - Make copies of the Picisel Products or make them available for use by third parties.
 - Reverse engineer, disassemble, reverse translate, or in any way decode the Picisel Products or any copy or part of it in order to derive any source code, save only as is permitted by any applicable law.
- 3 Picisel make no representations or warranties whether express or implied (by statute or otherwise) relating to the performance, quality, merchantability or fitness for a particular purpose of the Picisel Products or otherwise and all such representations or warranties are specifically disclaimed and excluded.

- 4 Picsel agrees and acknowledges that Picsel and the Picsel Products will not be specifically mentioned in the end user license agreement.



.....
NOTE: No support for advanced settings, such as Microsoft Word drawing plug-in or table background settings.



.....
NOTE: Contents outside the defined borders in Microsoft Word will not be displayed.



.....
NOTE: Microsoft PowerPoint slide effects not supported.



.....
NOTE: Worksheets are displayed individually and sequentially when the workbook has multiple worksheets.



.....
NOTE: Page layout and numbering may be changed during decoding.



.....
NOTE: Objects embedded in files cannot be activated or viewed.



.....
NOTE: Decoding may take a while for large files with complex contents.



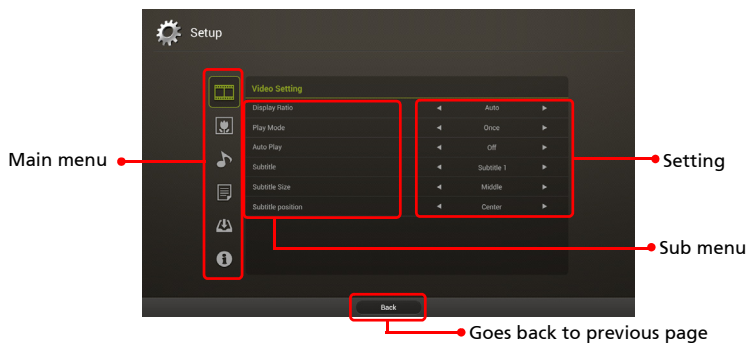
Media Setup

Media setup page allows you to adjust settings for file listing and playing. To use the media setup page:

Press MEDIA SETUP when listing or playing media files to access individual menu items for different types of media files.

Or you can follow below steps to access all menu items.

- 1 Adjust projector source to MEDIA.
- 2 Press ◀/▶ to select Setup and press ENTER.
- 3 Press ▲/▼ to select a main menu item and press ENTER to enter.
- 4 Press ▲/▼ to select a submenu item and press ◀/▶ to change setting values.
- 5 To exit, press BACK.



Video Setting

Display Ratio	Use this function to choose your desired aspect ratio. <ul style="list-style-type: none"> • Auto: Keeps the image with original width-height ratio and maximizes the image to fit native horizontal or vertical pixels. • 1:1: Keeps the image with original width-height aspect ratio.
Play Mode	Adjusts the play mode.
Auto Play	Automatically plays video files when selecting "Video" in the MEDIA HOME page.
Subtitle	Use this function to choose your desired subtitle.
Subtitle Size	Adjusts the subtitle size.
Subtitle Position	Adjusts the subtitle position.

Photo Setting

Display Ratio	Use this function to choose your desired aspect ratio. <ul style="list-style-type: none"> • Auto: Keeps the image with original width-height ratio and maximizes the image to fit native horizontal or vertical pixels. • 1:1: Keeps the image with original width-height aspect ratio.
Slideshow Duration	Use this function to set the time that each photo on a slide is displayed.
Slideshow Repeat	Decides whether you want to repeat the slideshow.
Slideshow Effect	Chooses a slideshow effect that you want.
Slideshow Background Music	Plays music files stored in the same input during a slideshow. <ul style="list-style-type: none"> • On: Plays all the music files in sequence. • Shuffle: Randomly plays music files.

Music Setting

Play Mode	Adjusts the play mode.
Show Virtual Effect	Decides whether you want to show the virtual effect.
Auto Play	Automatically plays music files when selecting "Music" in the MEDIA HOME page.

Document Setting

Display View	Adjusts the display view. <ul style="list-style-type: none"> • List: The files are displayed in a list of filenames. • Thumbnail: The files are displayed in thumbnail previews.
---------------------	--

Firmware Upgrade

Select Yes to do firmware upgrade by USB handy drive.

- 1 Download new media FW files by one compressed file from acer global website.
- 2 Copy all uncompressed files in USB handy drive (XXXX.bin as released and UPGRADEINFO.INI), and plug in projector.
- 3 Check projector source upto USB A.
- 4 Media Gallery > Setup > Firmware Upgrade.
- 5 Confirm to go.
- 6 Projector will show welcome screen automatically when upgrade finishes.



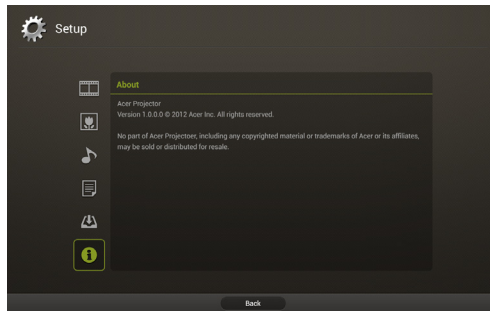
.....
NOTE: When upgrading the firmware, remove all cables and other USB devices.



.....
NOTE: To utilize the Wireless Display function (optional), make sure you have updated the firmware to the latest version from www.acer.com, and use the acer USB WiFi adapter, UWA2.

About

This page displays the general information about this projector.



Supported multi-media formats

1	JPEG Decode	Supports JPEG picture formats
		Thumbnails preview
		Supports BMP picture formats
2	Video Decode and Movie Formats	Supports MJPEG
		Supports H263, H264
		Supports AVI, MOV movie formats
		Supports 3gp movie format
		Supports SRT Subtitle format.
3	Music Formats	Supports PCM, ADPCM audio formats
		Supports WMA/OGG/MP3
4	Card Reader Interface (for selected models)	Supports SD memory card
		Supports SDHC memory card
5	USB Interface	Supports mass storage class
		Supports USB2.0



.....

NOTE: The video clip and its SRT subtitle file must be located in the same folder and with same filename (ex. Abcde.avi & Abcde.srt).



.....

NOTE: Some user-made subtitles may not work properly.



.....

NOTE: Video clips produced with some encoders may not be played correctly. Detail is to follow format supported table.



.....

NOTE: The media mode supports max. 999 directories and max. 9999 files for USB devices/disks.

Supported photo formats

Image type (ext name)	Sub type	Encode type	Max pixels
Jpeg / Jpg	Baseline	YUV420	No Limitation
		YUV422	
		YUV440	
		YUV444	
	Progressive	YUV420	5120 X 3840
		YUV422	
		YUV440	
		YUV444	
BMP			No Limitation



NOTE: JPEG header size must be under 512 Kbytes.

Supported music formats

Music type (ext name)	Sample rate (KHz)	Bit rate (Kbps)
MP3	8-48	8-320
WMA	22-48	5-320
OGG	8-48	64-320
ADPCM-WAV	8-48	32-384
PCM-WAV	8-48	128-1536
AAC	8-48	8-256

Supported video formats

File format	Video format	MAX res	MAX bit rate	Frame rate	Audio format	Remark
AVI MKV	XVID MPEG-2/4 H.264 M-JPEG WMV3	1080P	30Mbps	30fps	AC3 DTS MPEG1/2/3 PCM ADPCM AAC	No support VC-1 AP H. 264 support less than 6 reference frames No Support AC3-HD,DTS-HD
TS	MPEG-2 H.264	1080P	30Mbps	30fps	AC3 DTS MPEG1/2/3 LPCM AAC	H. 264 support less than 6 reference frames No Support AC3-HD,DTS-HD
DAT VOB MPG MPEG	MPEG-1 MPEG-2	1080P	30Mbps	30fps	MPEG1/2/3 AC3 DTS LPCM	No Support AC3-HD,DTS-HD
MOV MP4 3GP	MPEG-4 H.264	1080P	30Mbps	30fps	AC3 PCM AAC	H. 264 support less than 6 reference frames
RM RMVB	RV3 RV4	720P	5Mbps	30fps	Cook (RA6) AAC (RA9) RACP (RA10)	-
WMV	WMV3	1080P	25Mbps	30fps	WMA2 WMA3	No Support VC-1 AP



NOTE: B-Frame function is not supported.

Supported subtitle formats

Format	Font	Subtitle Size
Standard SRT	UTF-8/ UTF-16	4bits up to 448x200 2bits up to 896x200



NOTE: Mixed code in subtitle files is not supported.

Supported document formats

File format	Support version	Pages/lines limitation	Size limitation	Remark
Adobe PDF	PDF 1.0	Up to 1000 pages (One File)	Up to 75MB	-
	PDF 1.1			
	PDF 1.2			
	PDF 1.3			
	PDF 1.4			
MS Word	British Word 95.	Because office viewer does not load all pages of MS Word file at the same time, there are no obvious limitations of page and line.	Up to 100MB	Not support Bold Text in Simple Chinese font
	Word 97, 2000, 2002, 2003.			
	Word 2007(.docx), 2010(.docx)			
MS Excel	British Excel 5, 95.	Row Limit: up to 595	Up to 15MB	Not support password-protected sheets
	Excel 97, 2000, 2002, 2003.	Column Limit: up to 256		
	Excel 2007(.xlsx), 2010(.xlsx).	Sheet up to 100		
	Office XP Excel	Note: Any one of three limitations above can not appear on one excel file simultaneously.		

MS PowerP oint	British PowerPoint 97.	Up to 1000 pages (One File)	Up to 19MB	No support SlideShow order
	PowerPoint 2000, 2002, 2003.			
	PowerPoint 2007(.pptx).			
	PowerPoint 2010(.pptx),.			
	Office XP PowerPoint.			
	PowerPoint presentation -2003 and earlier(.ppx)			
	PowerPoint presentation -2007 and 2010(.ppsx)			



DLNA Mode



This function allows you to project the media files stored on all DLNA devices under the same local network area wirelessly. Before using this function, please consider your network bandwidth and decide if you want to use the AP mode or Client mode.



.....
NOTE: Only Video/Photo/Music files are supported for this function.



.....
NOTE: DLNA only works under AP mode and Client mode.

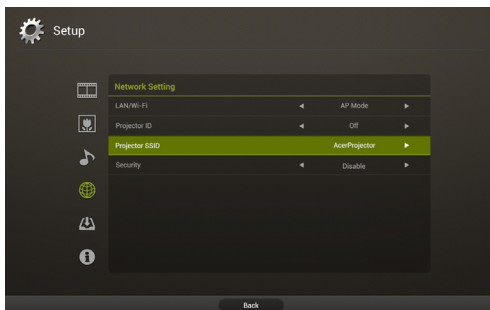


.....
NOTE: Make sure to finish network setup before using the DLNA mode.



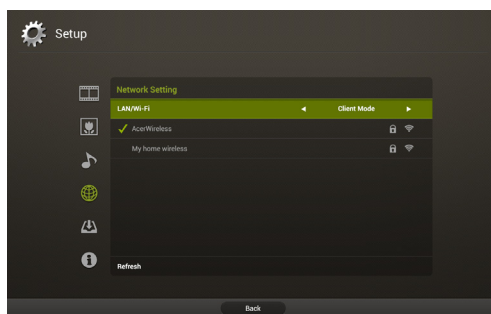
Network Setup

- Setting up the AP Mode



- 1 Connect the Wi-Fi adapter to the USB jack of the projector.
- 2 Adjust projector source to DLNA.
- 3 Press ◀/▶ to select Setup and press ENTER. The Network Settings page displays.
- 4 Press ◀/▶ to select AP Mode.
- 5 Highlight Projector ID and press ◀/▶ to decide if you want to enable Projector ID. If enabled, 4 digit random number will display on the upper-left corner of the splash screen when your NB/PC is connected to the projector.
- 6 If you would like to change the Projector SSID, highlight Projector SSID and press ▶ to modify.
- 7 If you would like to secure wireless networks, highlight Security and press ◀/▶ to select a preferred scheme. For details on Security settings, please see "Security settings".
- 8 After finishing adjustment, press Apply / Enter.

- Setting up the Client Mode



- 1 Connect the Wi-Fi adapter to the USB jack of the projector.
- 2 Adjust projector source to DLNA.
- 3 Press ◀/▶ to select Setup and press ENTER. The Network Settings page displays.
- 4 Press ◀/▶ to select Client Mode.
- 5 Select a network you want to join. If you select a secured network, a dialogue will pop up asking you to enter the username and password.



.....

NOTE: The projector cannot be connected to a network that requires you to enter the username and password on a webpage.

Media Console (DMP)



The projector works as a Digital Media Player (DMP) to browse and play media from other DLNA compliant devices or NB/PCs under the same local area network. The function works either when the projector is in AP mode or Client mode.

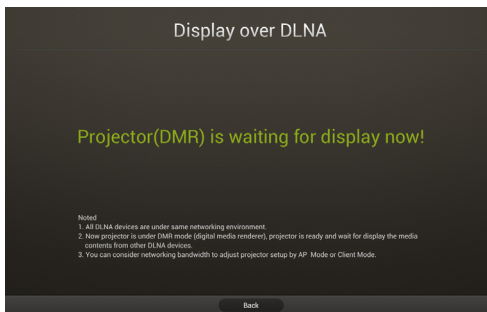
To use this function:

- 1 Adjust projector source to DLNA.
- 2 Press ◀/▶ to select Media Console (DMP) and press ▼ .
- 3 Press ◀/▶ to select a device and press ENTER.
- 4 Shared files will appear. For how to view and play the files, see "Music", "Photo" and "Video".



NOTE: The maximum number of files can be viewed or played is 1,000.

Media Display (DMR)



The projector works as a Digital Media Renderer (DMR) and waits for display media content from other DLNA compliant devices under the same local area network. The function works either when the projector is in AP mode or Client mode.

To use this function:

- 1 Adjust projector source to DLNA.
- 2 Press ◀/▶ to select Media Display (DMR) and press ENTER. Now you can use a DLNA compliant device to choose the photos, music or videos and play the content to the projector wirelessly.

Supported DLNA media formats

Supported photo formats

Image format	Profile	Color space	Size limitation
JPEG	Baseline	YUV400	8000*6000
		YUV420	
		YUV422	
		YUV440	
		YUV444	
	Progressive	YUV400	Width \leq 8000 & height \leq 6000
		YUV420	
		YUV422	
		YUV440	
		YUV444	
BMP	No limit	No limit	8000*6000

Supported music formats

Audio format	Sample rate (KHz)	Bit rate (Kbps)
MP1/MP2/MP3	8-48	8-320
WMA	22-48	5-320
ADPCM-WAV	8-48	32-384
PCM-WAV	8-48	128-1536

Supported video formats

File extensions	Audio/video	Codec	Profile/level support	Remark
.avi .divx .mkv	Video	MJPEG	Up to 1080P 30fps 40Mbps	
		H.264/AVC	Up to high profile, levels 1-4.1 (1080P 30fps 16Mbps)	Support less than 6 reference frames
		DivX 4/5/6	Up to advance simple profile (1080P 30fps 16Mbps)	Not supported scan type: interlaced Support GMC less than 1 warppoints
		XVID	Up to advance simple profile (1080P 30fps 16Mbps)	
		WMV3 (WMV Ver9)	Up to main profile; low, medium level (1080P 30fps 16Mbps)	
		MPEG2	Main profile, low and main levels (1080P 30fps 16Mbps)	
		MPEG4	Advanced simple profile (frame picture), levels 0-5 (1080P 30fps 16Mbps)	
		VC-1	Simple and main profile; low, medium and high levels (1080P 30fps 16Mbps)	Not support VC-1 advance profile

.avi .divx .mkv	Audio	AC3		Not support AC3-HD
		DTS		Not support DTS-HD
		MPEG-1 layer I, II		
		MPEG-1 layer III (mp3)		
		PCM		
		ADPCM		
		AAC	AAC-LC and HE-AAC	
.ts	Video	MPEG2	Main profile, low and main levels (1080P 30fps 16Mbps)	
		H.264/AVC	Up to high profile, levels 1-4.1 (1080P 30fps 16Mbps)	Support less than 6 reference frames
	Audio	AC3		Not support AC3-HD
		AAC	AAC-LC and HE-AAC	
		MPEG-1 layer I, II		
		MPEG-1 layer III (mp3)		
		DTS		Not support DTS-HD
LPCM				

.dat .vob .mpg .mpeg	Video	MPEG1	Main profile, low and main levels (1080P 30fps 16Mbps)	D-picture not support	
		MPEG2	Main profile, low and main levels (1080P 30fps 16Mbps)		
	Audio	MPEG-1 layer I, II			
		MPEG-1 layer III (mp3)			
		AC3		Not support AC3-HD	
		DTS		Not support DTS-HD	
		LPCM			
	.mov .mp4	Video	MPEG4	Advanced simple profile (frame picture), levels 0-5 (1080P 30fps 16Mbps)	
			H.264/AVC	Up to high profile, levels 1-4.1 (1080P 30fps 16Mbps)	Support less than 6 reference frames
Audio		AAC			
		PCM			
		ADPCM			

.wmv	Video	WMV3 (WMV Ver9)	Up to main profile; low, medium level (1080P 30fps 16Mbps)	
	Audio	WMA2 (WMA Ver9 & Ver9.1)		Not support WMA Ver9 Pro

WiFi Display for Windows/Mac OS

Adjust projector source to LAN/WiFi. Select eDisplay.



NOTE: To utilize the Wireless Display function (optional), make sure you have updated the firmware to the latest version from www.acer.com, and use the acer USB WiFi adapter, UWA2.

System Requirements:

- Windows

Minimum requirement

Component	Requirement	Remark
CPU	Dual Core Intel Core i 1.6 GHz or higher	ATOM and Celeron are not supported
Graphic card	Intel, nVIDIA or ATI graphic card with 64MB VRAM or above	
Operating System	Windows XP SP3, Vista SP2, Win 7 SP1 and Win 8	Not support Starter version
HDD	40MB free space	40MB free space

Recommend system settings

CPU	Dual Core Intel Core i5 2.4Ghz
Memory	DDR 4GB and above
Graphic card	256MB VRAM or above
Operating System	Windows 7 SP1

- Mac OS

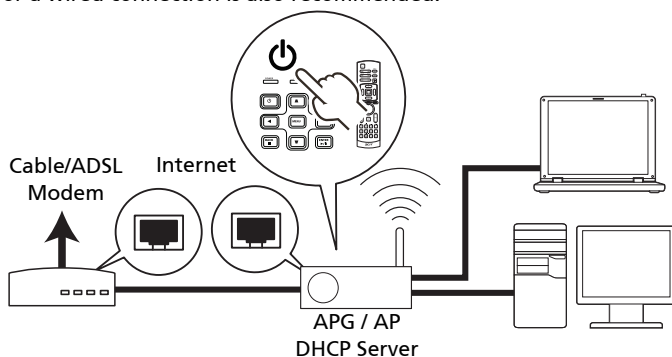
CPU	Dual Core Intel Core i 1.4 GHz or higher (PowerPC not supported)
Graphic card	Intel, nVIDIA or ATI graphic card with 64MB VRAM or above
OS	Mac OS X 10.7 and above
WiFi	802.11n
Recommended models	Mac Book series and iMac series after E/2011

Connect to the projector

Before you begin projecting, you will need to do the following things:

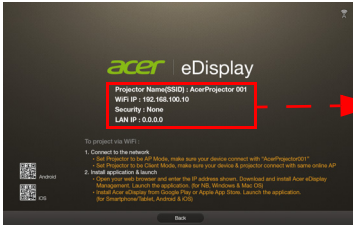
Turn on and connect to the network

Press the **Power button** on the bundled remote control or the device to turn on your Acer projector and enable the WLAN. Connecting the projector to the LAN for a wired connection is also recommended.



Select the source "LAN/WiFi", you will see the WiFi Display welcome screen. You can set the projector to play 2 kinds of roles: AP Mode (Default) or Client Mode by going to the Settings > LAN/WiFi menu.

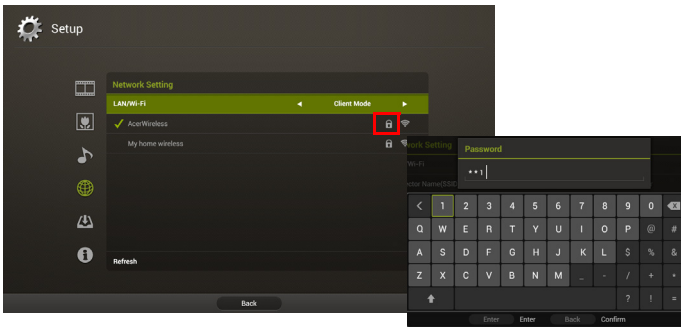
- 1 Select AP Mode in the LAN/WiFi setting, and the projector plays an AP role. You can tap "eDisplay" to see below splash screen.



Projector Name(SSID) : AcerProjector001
 WiFi IP : 192.168.100.10
 Security : None (default)
 LAN IP : 0.0.0.0 (if no LAN cable plugged in)

Check Projector ID (if enabled), a 4-digit random number will display on the upper-left corner of the screen, Projector Name (SSID, default name is AcerProjector), Server IP (default is 192.168.100.10) and Security (default is None).

- 2 Choose Client Mode in the LAN/WiFi setting and you will see below items. Please connect to an available AP and input password if necessary.



Then splash screen displays with below information.



Connected AP Name(SSID) : Depended
 Client IP : Depended
 Security : Depended
 LAN IP : 0.0.0.0 (if no LAN cable plugged in)

In Client Mode, you can project the screen from your tablet or smartphone to the projector by using the application "eDisplay" and access to Internet as well.

Check the information on the splash screen

Take note of the important information on the splash screen. The splash screen consists of the following items: **Projector ID**, **Acer logo**, **network information** and **instructions**.

Projector ID (displayed only when available)

The 4-digit number will not be displayed on the top left of the splash screen until this option is enabled by the supervisor in the **Configure** tab under Acer eDisplay Management. The four digits are given randomly for projector identification. For more information, please see "Projector ID".

Projector Name (SSID)

The Projector Name and initial Service Set ID (SSID) can be added by the supervisor on the Configure tab of Acer eDisplay Management. For more information, please see "Network settings".

Server IP

The Server IP indicates the IP address your projector uses to connect to a wired or wireless network. It will be 192.168.100.10 for general wireless and wired connections. The Server IP will be assigned by the wired network with DHCP enabled. For more information, please see "Network settings".



.....
NOTE: If a RJ-45 cable is not connected, the LAN IP will be 0.0.0.0.

Security: (None, WPA-PSK, WPA2-PSK)

WPA-PSK (Wi-Fi Protected Access - pre-shared key) and WPA2-PSK are ~~other~~ individual encryption methods with higher level security. The option is enabled by the supervisor in the **Configure** tab under Acer eDisplay Management. For more information, please see "Security settings".

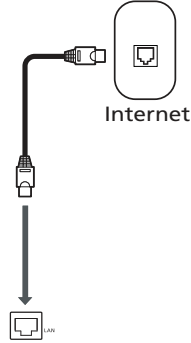


.....
Note: Make sure the LAN/WiFi setting in the projector OSD is On when using the WiFi Display and DLNA functions.

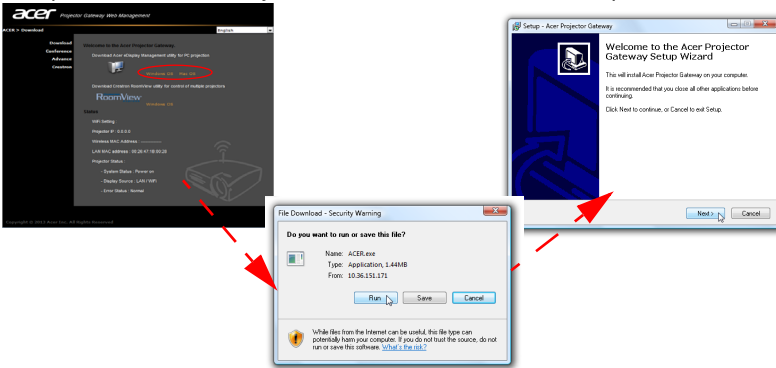
Follow the instructions on the splash screen to connect and project

- 1 Check **Projector ID**, **Projector Name (SSID)**, **Server IP** and **Security option** on the splash screen. Ask your supervisor to set safer key when Security is enabled.

- 2 Enable your WLAN and select the access point labeled **AcerProjector** or **AcerProjectorXXXX** to connect wirelessly. Connect the projector to your LAN for a wired connection.



- 3 Open the Internet browser (see note). Click on **Download Acer eDisplay Management** on the welcome page, and then click **Run** to launch the **Welcome to the Acer Projector Gateway Setup Wizard**. The installation will proceed automatically. Make sure the installation is complete.



Note: If you do not see the welcome page or cannot connect to the wired network, please enter the **Server IP** address (the second item listed under the Acer logo on the splash screen) into your browser's address bar.



Note: Ensure that you have administrator-level permission on your NB/PC so that you can install the software.



.....

Note: If you receive any security warnings, click **OK** to proceed with the installation procedure.



.....

Note: The Acer eDisplay Management shortcut will be created in desktop when the installation is complete.



- 4 Acer eDisplay Management will execute automatically and the window shown below will pop up to search for your Acer projector.



.....

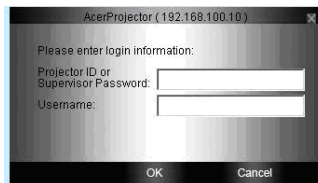
Note: Make sure your personal firewall does not block the Acer eDisplay Management application.



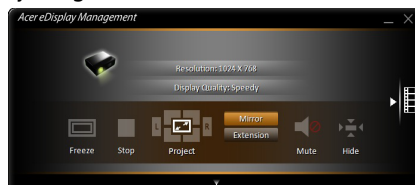
.....

Note: If your NB/PC cannot allow auto-run function, please execute AcerProjectorGatewayW7.exe manually.

- 5 When the search is complete, a login dialog box will pop up to ask you to enter the User name and Projector ID (if needed) to log in to your acer projector.



- 6 The UI will look as it does below when your source successfully connects and begins projecting in 1024 x 768 mode.



.....

Note: For the best projection performance, Acer recommends adjusting your resolution to 1024 x 768.

Acer eDisplay Management

Acer eDisplay Management helps users connect to, and control Acer projectors.

Acer eDisplay Management includes the following features:

For first time installation

The utility can be downloaded directly from the projector using a wireless or wired network connection.

The software will be set up on any NB/PC in just a few minutes, without disks.

Security

Acer eDisplay Management supports PIN code security, protecting the Acer projector from unauthorized access and use.

Wireless communications between the Acer projector and NB/PC are protected using unique, image-based encryption to prevent eavesdropping or modification of the video signal.

Simple GUI for one-click projection

The easy-to-use GUI enables one-click usability in finding and connecting to the wireless projector, changing display settings, and controlling the projector.

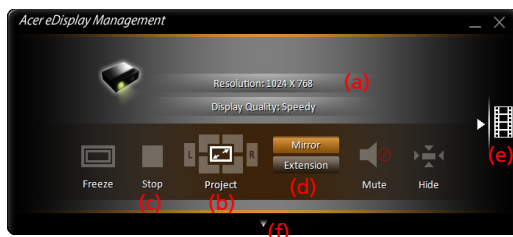
It also supports up to four simultaneous presentations.

Onscreen remote

An onscreen remote utility gives any user the ability to control functions of the projector without the owner worrying about the loss of or damage to the projector's remote handset or worn-out batteries.

Compact user interface

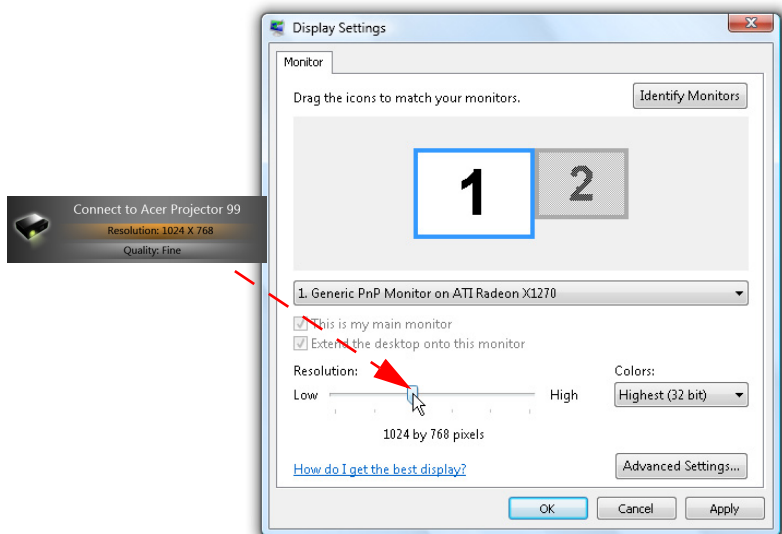
The compact user interface (UI) provides a solid look and feel.



NOTE: The Freeze and Hide are optional functions.

- Allows you to change the projection resolution (a).

To change the projection resolution, click on the resolution below the projector icon to reveal a list of choices.



- Projects in split-screen or full-screen (b).

To project from multiple sources, click a number to display by split screen in corresponding location.

- Starts projecting or stops projecting (c).
- Mirroring or extending your screen (d).



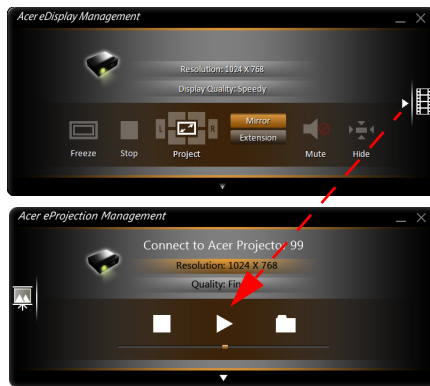
NOTE: You cannot extend your screen while playing video files.


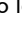


NOTE: You cannot extend your screen in Windows 8 operating system.

- Changes to video playing (e).

You can also select video clips to display from the compact window by clicking the arrow on the left of the screen.



Select a video clip, and click the Play icon  to load and Stop icon  to stop the playback.



NOTE: The video formats supported are MPEG2/MPEG4/H.264. Connect via the LAN for better performance if playing video. The full rate will be 30 fps depending on the video format.



NOTE: You cannot extend your screen while playing video files.

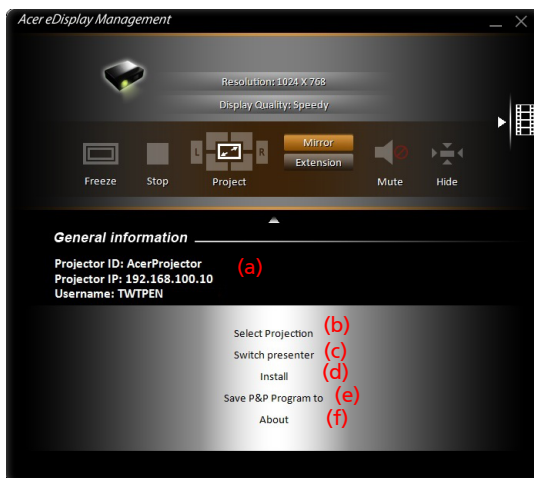


NOTE: Audio files are not supported.

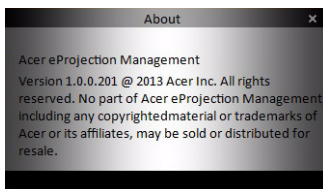
- Changes to full user interface (f).

Full user interface

You can click the down arrow to reveal the full UI from the compact UI.



The Main tab of the full UI displays Projector ID, Projector IP and User name information (a), and gives you the option to select a different wireless projector (b). Change other NB/PCs who connected this projector by Switch presenter (c). You may also do real installation in hard disk via P&P token by clicking Install (d) or make another token via Save P&P (Plug & Play) Program to (e). About (f) displays version information of Acer eDisplay Management.



Note: To enjoy extension display, you must finish real installation in hard disk. You cannot extend the screen if you are using eDisplay via P&P token.

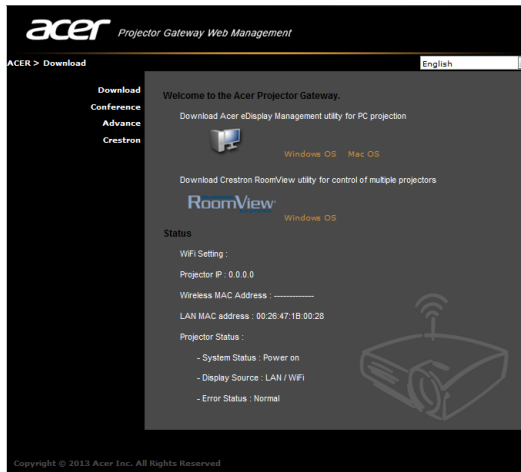
Acer Projector Gateway Web Management



NOTE: Settings on the webpage can only be adjusted when the projector is in AP mode.

Open the Internet browser, it will redirect to "Acer Projector Gateway Web Management" main page automatically, or you can enter the Server IP address to access that.

The default IP address is 192.168.100.10 for general wireless connections.



Download

Download the client software.

You can download installation program for different platforms to execute -

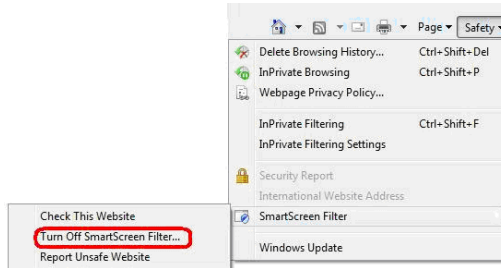
- Acer eDisplay Management application for Windows NB or PC
- Mac Utility Client for Mac OS
- Crestron RoomView

After installing the program, the shortcut will come out on the screen.



Note: You also can download it from installation CD.

Note: If using IE V 8.0, please disable SmartScreen Filter before executing download process.

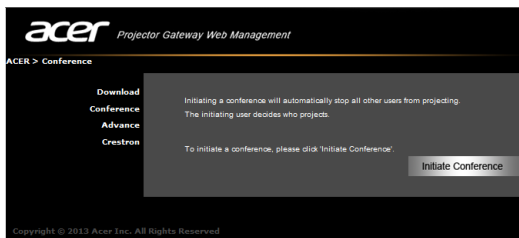


Network Status

Shows IP address of this connection and projector status.

Conference

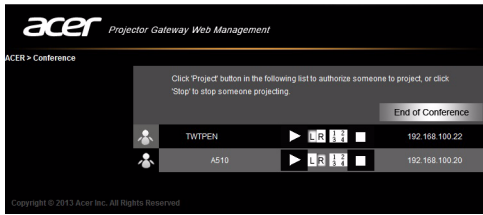
You can initiate conference by webpage.



Clicking on **Initiate Conference** gives you control over who is projecting at any time, deciding the display location for the participant(s), and prevents the current presenter from being disconnected inadvertently. You can select from L/R split-screen or 4 split-screen patterns.

Once a conference has been initiated, all the persons connected to the projector are displayed in a list. The active user is indicated by a shallow in his display

location. To activate a user, click on the **play this user** icon next to the user's name.



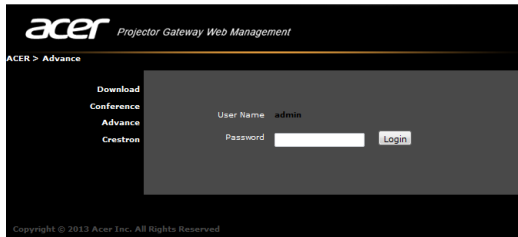
Click **End of Conference**  to end the conference.



Note: Please remember to log out if you want to end conference.
Note: Up to 8 users in same conference room are allowed.

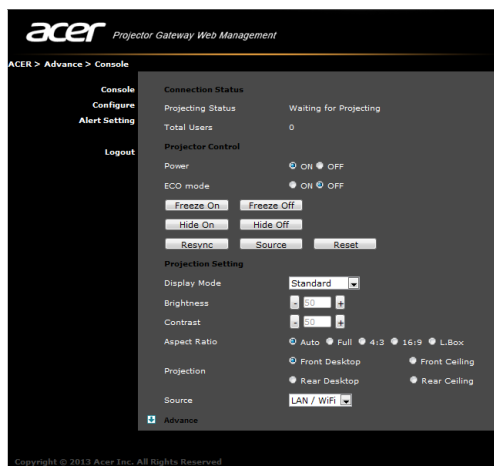
Advance

Login Admin password is default by 123456 to access the advanced setting page.



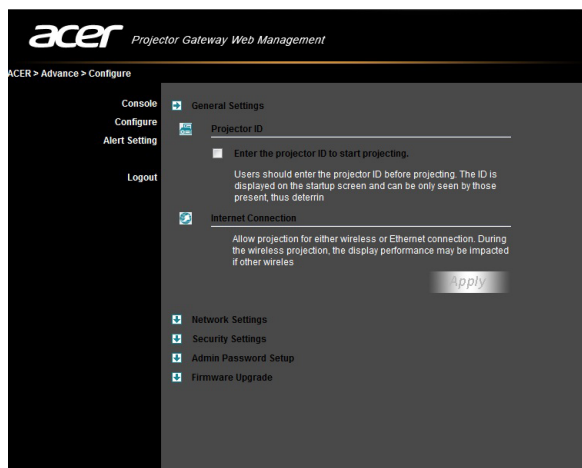
Console (optional)

The Console page gives you access to a variety of status and control features to adjust best projection settings. From this page, you can get projection status, adjust brightness, contrast and aspect ratio, as well as change source and several advanced setting. You can also turn off the projector directly from this page.



Configure

The Configure tab allows you to change a variety of settings.



Projector ID

You can check **Enter the projector ID to start projecting** to ensure that only people in the room are able to access the projector. You can also select who can connect to the Internet via the projector's WLAN router - either all the meeting attendees, or only the person currently projecting.



Note: The APG needs to reboot to apply changes made in **Configure** mode. Please connect to the projector again if you want to continue to use it.

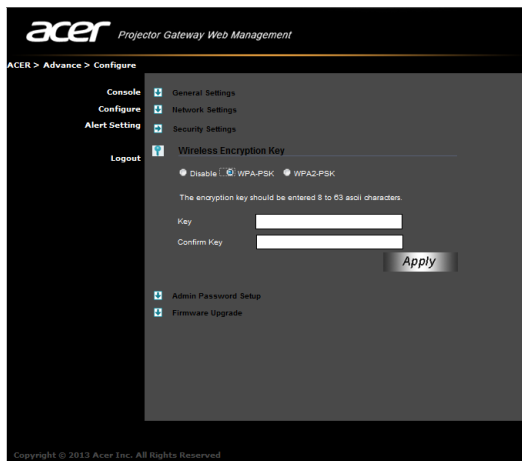
Network settings

Click **Network settings** to adjust other network settings.

The screenshot shows the 'Acer Projector Gateway Web Management' interface. The left sidebar contains navigation options: Console, Configure, Alert Setting, and Logout. The main content area is titled 'ACER > Advance > Configure' and shows the 'Network Settings' section. Under 'Network Settings', there are two radio buttons: 'Obtain an IP address automatically' (selected) and 'Use the following IP address:'. Below these are fields for 'Device IP', 'IP Address', 'Netmask', 'Gateway', and 'DNS', all set to '0 . 0 . 0 . 0'. To the right, there are 'DHCP Server' options: 'Auto' (selected) and 'OFF'. Further right are 'Start IP' (192 . 168 . 100 . 20), 'End IP' (192 . 168 . 100 . 254), and 'Gateway' (192 . 168 . 100 . 10). An 'Apply' button is visible at the bottom right. At the bottom of the main content area, there is a 'Security Settings' option.

Security settings

If you're projecting sensitive information, you may want to set up a WPA-PSK key by clicking **Security settings**.



The WPA-PSK/WPA2-PSK encryption key should be entered as 8 to 63 ASCII characters. This feature can be set and enabled by the supervisor.



Note: ASCII (American Standard Code for Information Interchange) is a code for representing characters as "0-9, a-z, A-Z, !, @, #, \$, %, &, *, -, _ , +, =, /, ?" are allowed. Hexadecimal digits consist of the numbers 0-9 and the letters A-F/a-f.




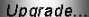
Note: If your OS is Windows XP, additional hotfixes/patches may need to be updated from Microsoft website for WPA2-PSK.

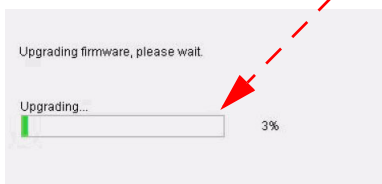
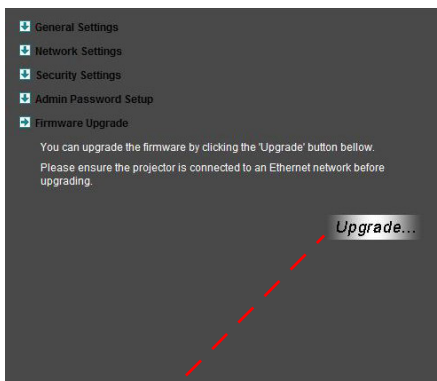
Note: Please be noted that enabling WPA-PSK/WPA2-PSK will increase computing loading and projection performance may be subjected to it.

Admin password setup

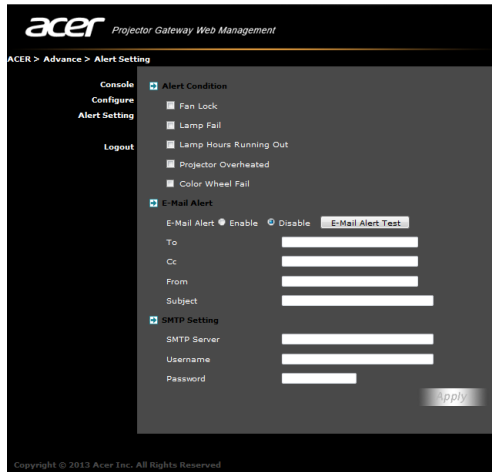
Change the password to login **Advance** webpage by clicking **Admin password setup**. The default supervisor password is 123456.

Firmware upgrade

Ensure the projector is connected to the LAN and the Internet, and click on **Firmware upgrade**  and then click the **Upgrade...** button . The projector will access the Internet to automatically download and install any available upgrades.



Alert Setting (optional)

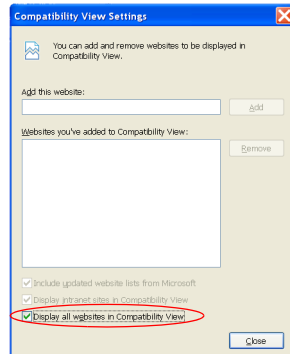
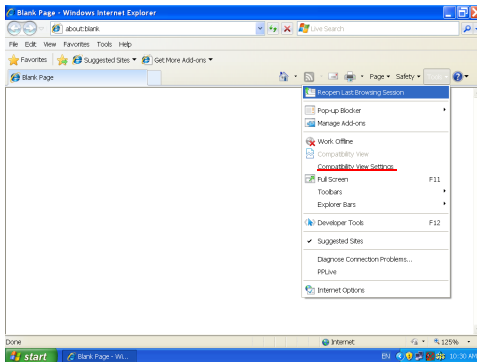


Logout

After tapping "logout", you will return to the download page.



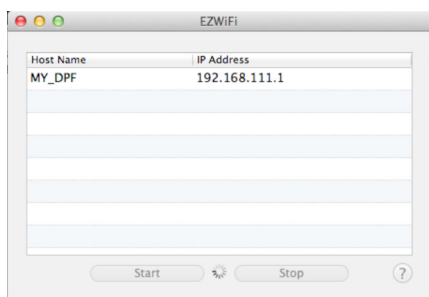
Note: If using IE V8.0, please adjust setting in **Compatibility view settings** to make sure display normally.



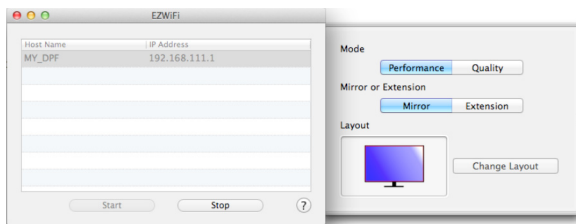
Mac Utility for Mac OS

You can project Mac screen via EZWifi.

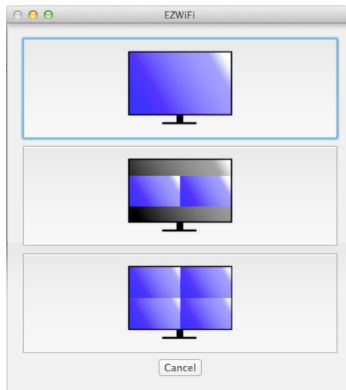
- 1 You can get installation program from CD or download from webpages (See "Acer Projector Gateway Web Management").
- 2 Install the software by double clicking on EZWifi.dmg.
- 3 Make sure you have turned on and connected to the projector. See "Connect to the projector".
- 4 Execute EZWifi.
- 5 Select the projector you want to display.



- 6 You will see below screen and you can select the display mode and decide if you would like to mirror or extend your screen.



- 7 If you want to switch to Split screen for other people to join your display, select "Change Layout".



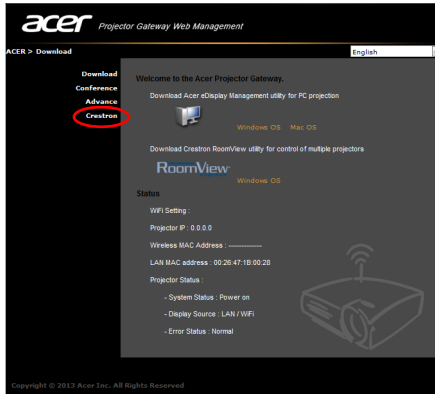
- 8 You can allow maximum 4 different sources to display by the layout change.

Crestron Control Tool (optional)



NOTE: This function is only available for the models equipped with a RJ45 port.

Open the Internet browser, You can find Crestron link in the mainpage of "Acer Projector Gateway Web Management". Tap Crestron to popup extra interactive FLASH webpage and start to use.



Mainpage



You can control projector by easy-to-use interface as Crestron tool, like volume control, source change and projector setting. For more information, please visit <http://www.crestron.com> & www.crestron.com/getroomview.

Tools

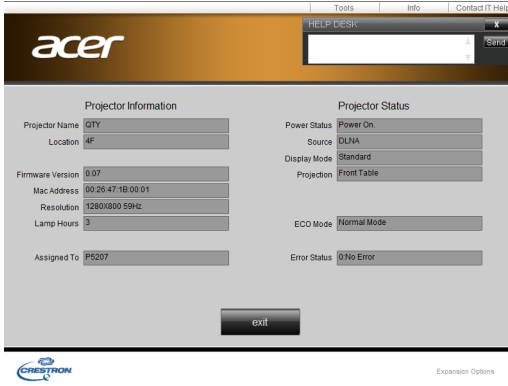
You can get projector IP information here, also can modify networking setting manually and set up password as wish.

Info

You can find projector information easily by this page and also can add additional information to help you manage each projector.

Contact IT Help

If you encounter any problem about projector, you can use this message window in upper-right of page to do real-time communication with IT people.



WiFi Display for iOS/Android (Tablet/Smartphone)

By installing the eDisplay on your iOS/Android tablet/smartphone, you can display documents/photo/web contents to the projector.

- 1 Adjust projector source to LAN/WiFi and the projector is now ready for projection.
- 2 Download the application "eDisplay" from Google play or Apple store. This application contains the following functions: Document, Dropbox, Internet, Photo, Camera, Video and Split control.



NOTE: The result of viewing documents via eDisplay depends on the hardware ability of your smart device. When the memory of your smart device is insufficient, some documents may not display correctly.

System requirements

- iOS

Phone	iOS 5 above. iPhone 3GS, iPhone 4, iPhone 4S, iPhone 5
Pad	iOS 5 above. iPad 2, the new iPad 3rd gen, new iPad 4th gen, iPad mini

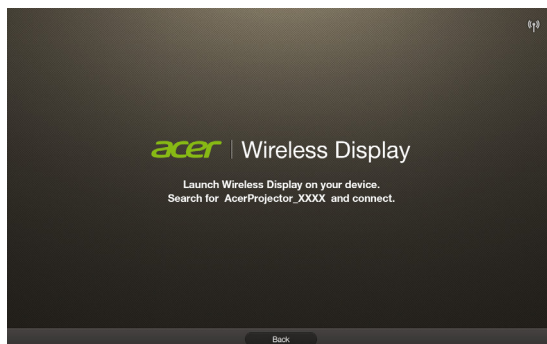
- Android

Phone	Android 4.0 ICS model with 1GB RAM
Pad	Android 4.0 ICS model with 1GB RAM



Wireless Display (optional)

Adjust projector source to LAN/WiFi, choose "Wireless Display", you can enjoy mirroring projection from your smartphone to the projector (Android V4.2 and above).



NOTE: To utilize the Wireless Display function (optional), make sure you have updated the firmware to the latest version from www.acer.com, and use the acer USB WiFi adapter, UWA2.

Using the USB Modes



Accessing internal memory (RAM)

- 1 Adjust projector source to USB B.
- 2 Connect the USB cable to both projector and NB/PC, plug the type B host to Projector side and type A host to NB/PC side.
- 3 Press ▲/▼ to select USB Storage (RAM) and press ►.
- 4 The projector can be seen as a portable device with a capacity of up to 1 GB on your NB/PC. You can now transfer media files to the projector.

USB Display

Introduction

You can connect the USB cable to both projector and NB/PC and adjust projector source to USB B to display the content in your NB/PC.

Compatible with Windows XP/ Vista/ 7/ Mac OS

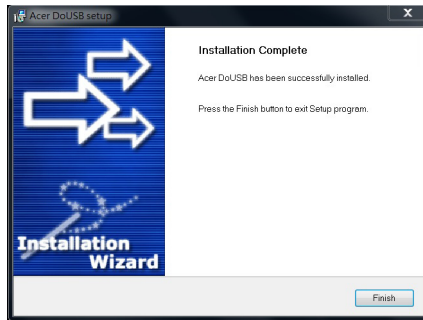
The USB Display projection function can be performed under Windows XP with Service Pack 2 and above / Windows Vista 32 bits and 64 bits environments / Windows 7 32bits and 64 bits, and under Mac OS X 10.7 and above.




Note: only support one NB/PC to one projector (1-to-1 screen projection) by USB Display connection.

How to start USB Display

- Under Windows OS
- 1 Adjust projector source to USB B.
 - 2 Press ▲/▼ to select USB Display and press ► .
 - 3 Connect the USB cable to both projector and NB/PC, plug the type B host to Projector side and type A host to NB/PC side.
 - 4 Execute the "Acer_USB.exe" and follow the on-screen instructions to complete the installation.




Note: If the autorun feature has been disabled on our NB/PC, please browse to the CD ROM and execute the "Acer_USB.exe" manually.

- 5 System will start to install the software on your NB/PC. (For the first time.)
- 6 Reboot your NB/PC.
- 7 Double click the icon on your NB/PC. 
- 8 Below screen will be projected along with your NB/PC's screen through USB cable. And you can decide if you would like to mirror or extend your screen, check Compatible Mode if you find your projected screen incomplete, and decide if you would like to start audio streaming.





NOTE: You cannot extend your screen while using the Microsoft Media Player.

- 9 Unplug the USB cable or quit the application to stop displaying over USB.
- Under Mac OS
 - 1 Adjust projector source to USB B.
 - 2 Press ▲/▼ to select USB Display and press ►.
 - 3 Connect the USB cable to both projector and NB/PC, plug the type B host to Projector side and type A host to NB/PC side.
 - 4 Execute the "EZUSBInstaller.dmg" and follow the on-screen instructions to complete the installation. (For the first time.)
 - 5 Reboot your NB/PC.
 - 6 Execute the application "EZUSB"  and your NB/PC's screen will be projected.
 - 7 The default setting is "Mirror" after eDisplay is successfully executed. Go to System Preference\Display to select Mirror/Extension mode if you would like to change the setting.
 - 8 Unplug the USB cable or quit the application to stop displaying over USB.

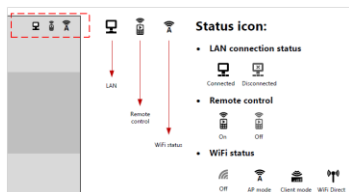
Troubleshooting

- Use the source list well to switch source for different media functions. Select the **MEDIA** source to play the multi-media contents; Select the **DLNA** source to play the multi-media contents from other DLNA-compliant devices; Select the **LAN/WiFi** source for WiFi display; Select the **USB B** source for USB display.
- It may take a little more time to play the contents in the USB hard drive with lots of multi-media contents and make sure enough USB power is fed to the USB hard drive.
- Before using the eDisplay or DLNA function, make sure networking setup is complete. AP Mode is recommended because of better bandwidth. Check if your devices has connected to the correct AP (Access Point) SSID, IP address and the correct password has been input (if the security function is enabled). For wired display, check LAN IP address (if no LAN cable plugged in, LAN IP is 0.0.0.0).

```

Projector Name(SSID) : AcerProjector001
WiFi IP : 192.168.100.10
Security : None
LAN IP : 0.0.0.0
  
```

- Before setting up for the WiFi Display or DLNA function, make sure to plug in acer USB WiFi adapter (optional) first.
- When you use WiFi display function, check status icon (like AP Mode, Client Mode or LAN disabled or enabled) on the upper right corner of the splash screen in the projector and wait a while for the network settings in the projector to take effect.



- When you enjoy USB projection, make sure to plug in the USB cable to your NB/PC and projector well. Then execute acer USB tool.
- This projector allows firmware upgrade via the USB handy drive (select the MEDIA source and go to the Setup > Firmware Upgrade menu).

*** Design and specifications are subject to change without notice.