

RESPONSE

LA9014

OBD II GSM/GPS Tracker User Manual



Quick Guide

1. Insert a SIM card (not included) into the SIM card slot located beside the case (Press yellow button to release).
Note: 4G SIM cards are acceptable to use with this device however the unit only operates on a 2G band.
This unit requires data to be activated on your pre-paid or contract SIM card. (Recommend order 20-30M/Month data package)
2. Insert the tracker into the OBDII socket (mostly located under the car panel, 12V or 24V vehicle compatible), the tracker will power on automatically.
3. Contact your mobile service provider to obtain the APN "name" in order to view the location on the tracking website. APN' s vary depending on your SIM card' s plan (i.e. pre-paid or contract)
4. Enter the following command via SMS on your the tracker to set the APN" name":
Send SMS **"APN*123456*apnname"**(123456 refers to the default password)
For example:
Plan: Vodafone Pre Paid
APN "Name" : live.vodafone.com
Send SMS: APN*123456*live.vodafone.com
If the APN "Name" has been entered correctly, you will receive a SMS stating "APN:live.vodafone.com"(example)
Note: The APN "name" needs to be entered correctly otherwise the location may show up in China, Africa, etc.
5. Login to the tracking website (**www.responsegps.com**) using the last 7 digits of the serial number for the username and password which is located in the battery compartment of the tracker.
For example:
Serial number: CC2014012345678
Username: 2345678
Password: 2345678
6. Free "Response GPS" app is available on iTunes® and **www.responsegps.com** tracking platform to easily view the current tracking location on your iOS® or Android smart phone or tablet.

App name:
ResponseGPS



■ Basic Functions:

GPS Tracker



■ Specification

- OBD interface, no installation charge
- Diagnostic Car Status (reply by SMS)
- Auto download & configuration setting for APN & GPRS
- SMS balance checking for Tracker SIM card
- App (Android? & iPhone?) / WeChat / Web / SMS / Waplocate
- Built in backup battery with powerdown alarm
- Built in Shock Sensor to detect car movements with shock alarm
- Shock Sensor controls uploading to save car battery power
- Online Air Upgrade From Internet Server by GPRS
- Cell ID locate when GPS is not available (Indoor or underground)
- Universal 4 GSM Band with Global & wide working voltage: 9-45V DC

■ LED indicator

GREEN LED Flash once: GSM & GPS working well

GREEN LED Flash twice: GSM working well but no GPS signal

GREEN LED Flash three times: GSM & GPS working well but battery is low

GREEN LED Flash four times: GSM working well, battery low and no GPS signal

GREEN LED ON continuously: GSM searching network

GREEN LED OFF continuously: Power off

GREEN LED Flash fast: incoming call or sending SMS

RED LED Flash once: uploading the current tracking

RED LED Flash twice: cannot upload the current tracking

RED LED Flash slowly: the tracker is being charged

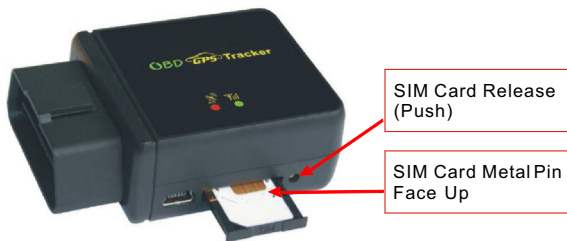
■ Before Using

1. Power ON / OFF

- ◆ Insert the tracker to the OBD socket and then the tracker will switch on automatically.
- ◆ Unplug the tracker from the OBD socket. Then you have up to 1 hour till the built in battery runs out of power and the tracker will switch off automatically.

2. Install SIM card

Press the push button beside the SIM card slot, the SIM card holder will pop out as shown in the image. Place the SIM card in the holder by leaving the metal pin side face up and then push the holder back into the tracker.



SIM Card Release
(Push)

SIM Card Metal Pin
Face Up

Note:

- 1> This tracker uses 2G GSM network, and it uploads tracking only through GPRS, it cannot work in CDMA network or 3G (WCDMA or CDMA2000) network. (Many 3G SIM cards can use 2G GSM network, this 3G SIM card can be used in this tracker).
- 2> Enable the SIM card GPRS data service, order a GPRS data package (20-30M/month) can save data charge (Normally the tracker will use about 20M GPRS data every month).
- 3> Please confirm the PIN code of the SIM card is disabled.
- 4> Before installing or uninstalling the SIM card, please power off the tracker.

3. ANTENNA

- ◆ The GSM and GPS Antennas are built-in with the tracker.
- ◆ The GSM and GPS signals may be reduced if the tracker is enclosed by the large metals panels.

4. Using Condition

The operating temperature range for this tracker is from -20°C to 60°C.

5. Back to factory setting (Default configuration)

Send SMS (factory*123456) to the tracker will delete all user settings and restore back to factory configuration.

Note: after the default configuration, IP / APN / GPRS / Language / Time zone / Alarm Setting etc. are deleted and back to factory setting. All the authorized phone numbers are deleted and the password will change to 123456. You will need to reset the IP/APN/GPRS name & password again by SMS.

■ Installation

1. Obtain a 2G GSM phone SIM card that needs SMS service, incoming caller ID display, and GPRS function. Please disable the PIN code of the SIM card, this SIM card phone number is the tracker number and all other operations (calling and sending SMS) for the tracker.
2. Plug the tracker into the OBDII socket. The OBDII socket is normally under the car panel, if you cannot find the OBDII socket, check the car manual or call your car manufacturer to confirm the location of the OBDII interface (Please confirm that your vehicle has the OBDII interface before you purchase this tracker).
3. After plug in the tracker to the OBDII socket, the tracker will switch on automatically. The built-in rechargeable battery will start charging automatically. The tracking is triggered by the shock sensor. So if the vehicle starts to move, the tracker will begin to upload its location and the tracker's status will be shown on the online platform immediately. If the vehicle stops moving, the tracker will stop uploading its location and switch to sleep mode and a few minutes later the tracker status on the platform also will change to offline. If you would like to keep the tracker online at all times, send SMS (keeponline*123456) to turn off the automatic sleep mode. This function will use more data and battery power.

■ How to Use

After installing the SIM card and insert the tracker into OBD socket, you can send SMS to locate and change tracker settings. The tracker uses password (default is 123456) to control, every SMS command needs to include the password. If you have set the authorized phone number, some commands do not need include the password. However, for better security please change the default password before using.

1. After installation of the tracker, park the car in the open place (indoor or underground cannot receive the GPS signal), send SMS (LOCATE*123456) to the tracker number (SIM card number), the tracker will reply via SMS message with a Google map link. Click the link to visit the map, the vehicle location will be displayed on the map. And this determines the tracker is working.
2. This tracker can download & configure the GPRS & APN settings automatically. If the APN or GPRS username & password are not correct for some reason, you can set the APN and GPRS username & password by sending SMS. You can check the APN & GPRS username password by sending SMS "CHECK*123456" to tracker, Send SMS "APN*123456*apnname" to the tracker can set the APN, and send SMS "USERNAME*123456*username*password" to the tracker can set the GPRS username & password, please see the following setting descriptions for detail.
3. Visit the website www.responsegps.com or www.999gps.net and logon with the given username and password. The username is the last 7 digits of the trackers serial number and the default password is the same as the username. For example, if the serial number is CC8301412345678, the default logon name and password should be 2345678. The serial number is printed on the label on the back of the device. The password and user information can be changed after logon, but the username cannot be changed. After logon, click on the vehicle that you wish to check and the current location will be displayed on the Google map. If the time and the location are correct, then you have installed the tracker and set the tracker properly.
4. For the iPhone® and Android® App please see the platform using guide.
5. If you have more than one vehicle that you wish to track, we can create a username that allows you to see all of your trackers at once. Ask your retailers for further information.
6. The data & time of the tracker upload to the website is GMT time (Greenwich Mean Time, add or minus a fixed digit is your local time), you can change the display time to your local time by setting the time zone to your local time zone in My Account menu after logon the platform (For example; New York time zone is -05), please refer the platform operation guide.

■ Setting Instruction

1. Check Tracker ID:

The tracker ID is printed on the label of the tracker, the S/N number on the label is the ID. Also if the label is missing, send SMS "**ID*123456**" to the tracker, in which, "**ID**" is the fixed command and "**123456**" is the password. Having it done successfully, there will be a SMS "ID: CC8301412345678", in which, "CC8301412345678" is the ID and every tracker has its unique ID number. The last 7 digits of the tracker ID is the username and password of the tracker on the platform, for example the tracker ID is: CC8301412345678, and then the user name on the platform for this tracker is 2345678 and the password is also 2345678. The password can be changed once logged in the platform, but the username cannot be changed.

2. Set Server IP

Send SMS "**IP*123456*58.64.155.133,8011**" to the tracker, in which, "**IP**" is the fixed command, "**123456**" is the password and "**58.64.155.133,8011**" is the IP address of the server computer of our website. Once it is successfully done, there will be a SMS "IP: 58.64.155.133, 8011". However, the IP address may be changed with the upgrade of our server, please see the notices on our website.

Notice: The tracker IP address is set to default: 58.64.155.133,8011 in factory, it is not necessary to set it again, unless our IP address or the uploading location has changed.

3. Set APN

This tracker can download & configure APN & GPRS username password automatically after power on. If the APN & GPRS username & password are incorrect for some reason, then you need to send SMS to the tracker to change them. If the tracker cannot upload location to platform (Red LED flash twice), please confirm the auto configuration of the APN & GPRS username & password are correct. For the APN and GPRS username & password, please call the SIM card service provider to find out. To check the auto configuration APN & GPRS of the tracker please send SMS "**CHECK*123456**" to the tracker number. If the APN & GPRS are not correct, please set by the following instructions below.

Send SMS "**APN*123456*apnname**" to the tracker, in which, "**APN**" is the fixed command, "**123456**" is the password and "**apnname**" is the APN name of the service provider. Having successfully done, there will be a SMS "**APN: apnname**".

Send SMS "**USERNAME*123456*username*password**" to the tracker, "**USERNAME**" is a command, "**123456**" is the password of the tracker; "**username**" is the mobile company GPRS username, "**password**" is the mobile company GPRS password, once it is successful, the tracker will send back the information "**Username: username, Password: password**", if the password is not correct and the operation was failed and you will receive an SMS "**Wrong Password**".

4. TrackerSIM Card balance and Data usage Checking

Most SIM card can send an SMS or call a specified USSD command number to get an SMS with SIM card money or data balance, for example PCCW mobile phone SIM card, call ##121#, Union mobile phone send SMS CXYE to 10010, the mobile phone company will send back the SMS with money & data balance. For this kind of SIM card, after set by the following step, sending SMS to tracker can check the tracker SIM card money or data balance.

Set sending SMS or call USSD number to check balance:

Send SMS "**BALANCEMODE*123456*SMS**" to the tracker, it means sending SMS to check balance, in which, "**BALANCEMODE**" is the fixed command, "**123456**" is the password and "**SMS**" means sending SMS. Having successfully done, there will be a SMS "**Balance Mode: SMS**".

Send SMS "**BALANCEMODE*123456*CALL**" to the tracker, it means calling USSD command number to check balance, in which, "**BALANCEMODE**" is the fixed command, "**123456**" is the password and "**CALL**" means calling USSD number. Once it is successfully done, there will be an SMS "**Balance Mode: CALL**".

Set sending SMS number or call USSD number:

Send SMS "**BALANCEPHONE*123456*NUMBER**" to the tracker, in which, "**BALANCEPHONE**" is the fixed command, "**123456**" is the password, "**NUMBER**" is phone number or USSD command number, for example: PCCW is calling ##121# to trigger replying SMS with balance, then the NUMBER is ##121#, Union mobile phone is sending CXYE to 10010 to trigger replying SMS with balance, then the NUMBER is 10010. Once it is successfully done, there will be an SMS "Balance Phone: ##121#" or "**Balance Phone: 10010**".

Set sending SMS content:

For balance checking via SMS, you need to set the sending SMS content, if the balance checking is calling USSD number, then it is not necessary to set this. Send SMS "**BALANCESMS*123456*sms**" to the tracker, in which, "**BALANCESMS**" is the fixed command, "**123456**" is the password, "**sms**" is the sending SMS content to check balance, for example: Union mobile phone is sending CXYE to 10010 to trigger replying SMS with balance, then the sms is CXYE. Once it is done, there will be an SMS "Balance SMS: CXYE".

Trigger to Check Balance:

Once the above settings are done, send SMS "**BALANCE*123456**" to the tracker, in which, "**BALANCE**" is the fixed command, "**123456**" is the password, the tracker will check the balance and reply SMS with balance to sender, reply SMS is different for each mobile phone company.

If the authorized number has been set, use the authorized phone number to send SMS "**BALANCE#**" to the tracker also can trigger the tracker to check balance.

Notice: After finish the above setting, it is not necessary to set it again unless the service provider has been changed or the tracker settings have been changed to factory default. Sending SMS "**BALANCE#**" or "**BALANCE*123456**" will be able to trigger the tracker to check balance.

5. Add /Delete / Check Authorized Phone Number:

The authorized phone number is used to send alarm information by SMS, or use mobile phone to locate the tracker without platform, if the authorized phone number is not set, then the alarm information can not send to user by SMS (alarm information, battery low, SOS, etc).

5.1. Add authorized phone number by SMS

Send SMS "ADDPHONE*123456*A*number" (Not including the quotation marks " ", number means the telephone number you want authorized, the following is same) to tracker is OK, "ADDPHONE" is a command; "123456" is password; "A" is authorized number location, every tracker have 3 authorized phone number, A and B, and C, so you can set 3 phone numbers, if the add operation is success, the tracker will send back the information "Add Authorized Phone OK", if the password is not right, the operation is fault, the tracker will send back information "Wrong Password".

5.2. Delete authorized phone number by SMS

Send SMS "DELETEPHONE*123456*A" to the tracker, "DELETEPHONE" is a command; "123456" is password; "A" is authorized phone number location, there are 3 locations "A" and "B" and "C"; if the delete operation is success, the tracker will send back the information "Delete Authorized Phone OK", if the password is not right, the operation is fault, the tracker will send back information "Wrong Password".

5.3. Check authorized phone number by SMS

Send SMS "CHECKPHONE*123456" to tracker, "CHECKPHONE" is a command; "123456" is password; if the operation is success, the tracker will send back the information "Authorized Phone A: 13987654321; B: 13876543210; C: 13765432101, the phone number is just an example. If the password is not right, the operation is fault; the tracker will send back information or "Wrong Password".

6. Change /Check Password

6.1. Change tracker password

Send SMS "CHANGEPASSWORD*123456*888888" to tracker, "CHANGEPASSWORD" is a command; "123456" is old password; "888888" is new password; if the operation is success, the tracker will send the information "New Password: 888888" to every authorized phone number, if the password is not right, the operation is fault, the tracker will send back information "Wrong Password" .

Note: Only authorized phone can change the password.

6.2. Check tracker password

Send SMS "CHECKPASSWORD" to the tracker, "CHECKPASSWORD" is a command, if the operation is success, the tracker will send back the information "Password: 888888" ; "888888" is an example.

Note: Only authorized phone can check or change the password.

7. Set Alarm by Calling: ON/OFF

Send SMS "CALLON*123456" (Call to authorized number) or "CALLOFF*123456" (No calling) to the tracker, "CALLON" or "CALLOFF" is a command, "123456" is the tracker password, if the operation is success, the tracker will send back the information "Alarm by calling: ON" or "Alarm by calling: OFF" , if the password is not right, the operation is fault, the tracker will send back information "Wrong Password" . If the alarm by calling is ON, then when the alarm is triggered, the tracker will call the authorized number to notice the alarm, the default setting is ON.

8. Set Alarm by SMS: ON/OFF

Send SMS "SMSON*123456" (Sending SMS to authorized number) or "SMSOFF*123456" (No SMS) to the tracker, "SMSON" or "SMSOFF" is a command, "123456" is the tracker password, if the operation is success, the tracker will send back the information "Alarm by SMS: ON" or "Alarm by SMS :OFF" , if the password is not right, the operation is fault, the tracker will send back information "Wrong Password" . If the alarm by SMS is ON, then when the alarm is triggered, the tracker will send SMS to the authorized number to notice the alarm. By default it is ON.

9. Set Power Down Alarm: ON/OFF

Send SMS "POWERALARMON*123456" (Power down will trigger alarm to authorized number by calling or SMS) or "POWERALARMOFF*123456" (No Alarm) to the tracker, "POWERALARMON" or "POWERALARMOFF" is a command, "123456" is the tracker password, if the operation is success, the tracker will send back the information "Power Down Alarm: ON" or "Power Down Alarm:OFF", if the password is not right, the operation is fault, the tracker will send back information "Wrong Password" . If the power down alarm is ON, then when the tracker is removed or the power is removed, the alarm is triggered; the tracker will call or send SMS to the authorized number to notice the alarm. By default setting is ON.

10. Set GPRS Mode: KEEPONLINE /SHOCKCONTROL

Send SMS "KEEPONLINE*123456" (Keep online all the time even the tracker stop moving) or "SHOCKCONTROLGPRS*123456" (Turn off GPRS after the tracker stop moving 2 minutes) to the tracker, "KEEPONLINE" or "SHOCKCONTROLGPRS" is a command, "123456" is the tracker password, if the operation is success, the tracker will send back the information "GPRS: Keep Online" or "GPRS: Shock Control", if the password is not right, the operation is fault, the tracker will send back information "Wrong Password". The default setting is Shock Control, when the tracker begin to move, the tracker begin upload the tracking, the tracker status on the platform will change to online immediately. If the tracker stop moving, the tracker will stop upload the tracking and turn off GPS & GPRS to go to sleep mode, a few minutes later the tracker status on the platform also will change to offline.

If the tracker is always online, the tracker will send tracker status to platform all the time, but this will exhaust more data charge and car battery power, and if the car will park long time or the car battery is old, this maybe cause the car battery power low and cannot start car engine, we do not recommend this working mode.

11. Set GPS Mode: GPSON/ SHOCKCONTROL

Send SMS "GPSON*123456" (GPS module Keep ON all the time even the tracker stop moving) or "SHOCKCONTROLGPS*123456" (Turn off GPS after the tracker stop moving 2 minutes) to the tracker, "GPSON" or "SHOCKCONTROLGPS" is a command, "123456" is the tracker password, if the operation is success, the tracker will send back the information "GPS: Keep ON" or "GPS: Shock Control", if the password is not right, the operation is fault, the tracker will send back information "Wrong Password". The default setting is Shock Control, when the tracker begins to move, the tracker turn on GPS, if the tracker stops moving, the tracker will turn off GPS to save car battery power.

The GPS module keep ON can get better signal and can locate very fast, but this will exhaust more car battery power, and if the car will park long time or the car battery is old, this maybe cause the car battery power low and cannot start car engine, we do not recommend this working mode.

12. Set Upload Time Interval

Send SMS "INTERVAL*123456*xxx" to tracker, "INTERVAL" is a command, "123456" is password, "xxx" is the interval time, which can be set from 30 to 999 seconds. The tracker will send back information "Set Interval xxx OK", if the password is not right, the operation is fault, the tracker will send back information "Wrong Password". 30 seconds is the default interval time. Longer upload interval time can save battery and GPRS data cost, but this will make the total mileage to more error.

13. Set Car Plate Name

Send SMS "PLATE*123456*PlateName" to tracker, "PLATE" is a command,"123456" is password,"PlateName" is the car plate number or name, after setting the car plate, the reply to tracker SMS will add car plate to indicate which car reply this message. The tracker will send back information "Car Plate: PlateName", if the password is not right, the operation is fault, the tracker will send back information "Wrong Password".

14. Check Car OBD Information

Send SMS "OBD*123456" to tracker, "OBD" is a command, "123456" is password, the tracker will send back OBD & car status information", if the password is not right, the operation is fault, the tracker will send back information "Wrong Password".

OBID information example:

Number of DTCs: 1, P0340, Car voltage: 13V, GPS battery 66%.

The detail information of the DTC please see the car owner book, the different model car has different DTC, the 4S or fixing factory can diagnostic your car by mobile phone.

15. Check tracker setting

Send SMS "CHECK*123456" to tracker, "CHECK" is the fixed command, "123456" is password. The tracker will send back information including software version, IDS/N number, IP address, authorized phone number, GPS and GSM signal etc. if the password is not right, the operation is fault, and the tracker will send back information "Wrong Password". The following is an example:

V Mar 03 2014, TQ, CC0830C00820800, 58.64.155.133, 8011, 30,
A:13987654321, B:13876543210, GPS OK, +00, ShockControlGPS,
-95dBm, ShockControlGPRS, CMNET, User, Password, 46000, e1d/2
4a0, 93%

V Mar 03 2014: Software version date

TQ: TCP/IP Protocol name

CC0830C00820800: ID S/N number

58.64.155.133,8011: Server IP and Port

13987654321: Authorized number (A/B/C)

GPS OK: GPS status

+00 : Time Zone (00 means GMT time)

ShockControlGPS: GPS module shock control

-95dBm: GSM signal strength

ShockControlGPRS: GPRS is controlled by shock sensor

CMNET: APN name

User: GPRS user name

Password: GPRS password

46000: Sim Card MCC+MNC

e1d/24a0: Current Cell ID

Battery: 88%: Battery

Note: This command is usually used to check the tracker current status & configuration, if the tracker cannot work well, this command can check what the problem is.

16. Re-power on tracker

Send SMS "RESET*123456" to tracker can make the tracker power off and power on again, "RESET" is the fixed command, "123456" is password. The tracker will send back information "Cancel all alarm setting and re-power on", then the tracker will power off and power on automatically, if the password is not right, the operation is fault, and the tracker will send back information "Wrong Password". Sometime the tracker cannot work properly, send the reset command, the tracker will re-power on a few minutes later.

17. Restore to factory setting (Back to Default)

Send SMS "FACTORY*123456" to tracker can make the tracker power off and power on again, "FACTORY" is the fixed command, "123456" is password. The tracker will send back information "Setting back to factory default", then the tracker will delete all user setting, and restore all setting to factory mode, just like a new tracker, then the tracker will re-power on after delete user setting. If the user have changed the setting, such as APN, IP, authorized number, etc, you need set this again after back to factory mode. If the password is not right, the operation is fault; the tracker will send back information "Wrong Password".

18. Upgrade Software by GPRS (Air Update)

Send SMS "UPGRADE*123456*FileName*69.195.124.168*21" to tracker can upgrade the software built in the tracker, "UPGRADE" is the fixed command, "123456" is password, "FileName" is upgrade file name, "69.195.124.168*21" is server IP and port. The tracker will send back information "Software File Name: FileName, IP:69.195.124.168, Port:21, start upgrading", please do not move the tracker so that the tracker can have better signal to download the new software, after finished downloading, the tracker will upgrade the software automatically, then re-power on the tracker and send back information "Upgrading Finish. Ver: Mar 08 2014", after upgrading all the setting will back to factory. If the password is not right, or the downloading is interrupt, the operation is fault; the tracker will send back information "Wrong Password" or "upgrading fails for read file data via FTP error, please try later".

When the upgrade is ready, we will notice on the website, the upgrade file name & server IP and port please contact us or dealer.

■ Locate Operation Instruction

1. Calling trigger locating by text description location

Using authorized phone call the tracker, after ring 3 times, the tracker will hang up the call automatically and locate immediately, a few seconds later the tracker will send back the location information with text description by SMS to the caller. If the tracker has not authorized number, any phone calling can trigger the tracker to locate immediately, if the tracker has authorized number, then only authorized phone calling can trigger the tracker to locate immediately.

The SMS information sample is as follow:



Send SMS "LOCATE*123456" to the tracker, "LOCATE" is a command, "123456" is password. If the operation is success, the tracker will send back the information as above.

If the authorized number have been set, use the authorized phone number to send SMS "123#" to the tracker also can trigger the tracker locate and reply the location with text description.

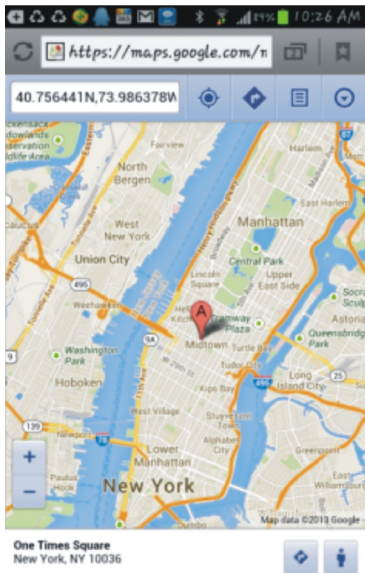
If the tracker cannot get the location in text description, it will reply the location with Google map link as follow.

2. Sending SMS trigger locating by Google? map link

Send SMS "URL*123456" to the tracker, "URL" is a command, "123456" is password. If the operation is success, the tracker will send back the location information with Google® map link to the sender. User click the link, the location in Google? map will display, the SMS example is as follow:

<https://maps.google.com/maps?q=22.67680N,114.15188E>

Battery: 88%



3. Cell ID Locate with Google map link

After sending SMS or calling the tracker to trigger locate, if the tracker cannot receive GPS signal or GPS signal weak (Underground Park or indoor etc), the tracker will change to Cell ID locate, and reply a location with Google[®] map link to the caller or sender. User click the link, the location in Google[®] map will display like above, the SMS example is as follow:

No GPS signal, Just Cell ID Location:

<http://maps.google.com/maps?q=N22.6775,E114.1518>

Note: this location is locate by GSM base station ID, the precision is not very high, in the city maybe 30-50 metres, in the country maybe over 1 km, so the location is only used for reference.

If the cell ID cannot get the location either, the tracker will reply "Cannot get location, please try again later" .

4. Arm (Shock Alarm) by sending SMS

Send SMS "SHOCKALARMON*123456" to tracker, "SHOCKALARMON" is a command, "123456" is password, the tracker will send back the information "Set Shock Alarm ON" to indicate the operation is success and go to arm state, if the password is not right, the operation is fault, the tracker will send back information "Wrong Password" .

Go to shock alarm state, the system will check shock sensor, if the shock sensor is trigger (**only continuously shock can trigger the shock alarm to avoid trigger by mistake**), the tracker will send alarm and location information by SMS to the authorized phone number, and send the alarm information to the website server, also the tracker will call the authorized number A first, if no answered then Band C, if 3 authorized all no answered, then stop calling, If the tracker is triggered continually, every authorized phone will receive max 3 alarm SMS per hour.

If the authorized number has been set, use the authorized phone number to send SMS "ARM#" to the tracker also can trigger the tracker to enter arm state.

The shock alarm SMS is as follow: Shock Alarm

<https://maps.google.com/maps?q=22.67680N,114.15188E>

Battery: 88%

5. Disarm (Shock Alarm) by sending SMS

Send SMS "SHOCKALARMOFF*123456" to tracker, "SHOCKALARM OFF" is a command, "123456" is password, the tracker will send back the information "Set Shock Alarm OFF" to indicate the operation is success and disable the shock alarm, if the password is not right, the operation is fault, the tracker will send back information "Wrong Password".

After disable the shock alarm, the system will not check shock sensor again. Also send SMS "CANCELALARM*123456" to the tracker can cancel this alarm setting.

If the authorized number has been set, use the authorized phone number to send SMS "DISARM#" to the tracker also can trigger the tracker to enter arm state.

6. Set Move Alarm by Sending SMS

Send SMS "MOVEALARMON*123456" (Enable move alarm) or "MOVEALARMOFF*123456" (Disable move alarm) to the tracker, "MOVEALARMON" or "MOVEALARMOFF" is a command, "123456" is password, the tracker will send back the information "Set Move Alarm ON" or "Set Move Alarm OFF" to indicate the operation is success, if the password is not right, the operation is fault, the tracker will send back information "Wrong Password".

After enable move alarm, the system will locate tracker and get the current location, and then set the current location as original point, later the tracker will check new the location distance from the original point, if the distance between is bigger than 500 meters, the move alarm will be triggered and the tracker will send alarm and location information by SMS to the authorized phone number. If the tracker is triggered continually, every authorized phone will receive max 3 alarm SMS per hour.

The move alarm SMS is as follow: Move Alarm

<https://maps.google.com/maps?q=22.67680N,114.15188E>

Battery: 88%

After disable the move alarm, the system will not check distance again. Also send SMS "CANCELALARM*123456" to the tracker can cancel this alarm setting.

7. Set Geo-fence Alarm by Sending SMS

Send SMS "GEOFENCEALARMON*123456*yyy" (Enable break geo-fence alarm yyy km) or "GEOFENCEALARMOFF*123456" (Disable break geo-fence alarm) to the tracker, "GEOFENCEALARMON" or "GEOFENCEALARMOFF" is a command, "123456" is password, "yyy" is the radius of the geo-fence (yyy is from 001 to 999, unit is km), the tracker will send back the information "Set Break Geo-fence Alarm ON" or "Set Break Geo-fence Alarm OFF" to indicate the operation is success, if the password is not right, the operation is fault, the tracker will send back information "Wrong Password".

After enable geo-fence alarm, the system will locate tracker and get the current location, and then set the current location as original point, later the tracker will check new the location distance from the original point, if the distance between is bigger than yyy km, the geo-fence alarm will be triggered and the tracker will send alarm and location information by SMS to the authorized phone number. If the tracker is triggered continually, every authorized phone will receive max 3 alarm SMS per hour.

The geo-fence alarm SMS is as follow: [Geo-fence Alarm](#)

<https://maps.google.com/maps?q=22.67680N,114.15188E>

Battery: 88%

After disable the move alarm, the system will not check distance again. Also send SMS "CANCELALARM*123456" to the tracker can cancel this alarm setting.

8. Set Over Speed Alarm by Sending SMS

Send SMS "OVERSPEEDALARMON*123456*xxx" (Enable over speed alarm xxx km/h) or "OVERSPEEDALARMOFF*123456" (Disable over speed alarm) to the tracker, "OVERSPEEDALARMON" or "OVERSPEEDALARMOFF" is a command, "123456" is password, "xxx" is the setting speed limited, the tracker will send back the information "Set Over Speed Alarm ON" or "Set Over Speed Alarm OFF" to indicate the operation is success, if the password is not right, the operation is fault, the tracker will send back information "Wrong Password".

After enable over speed alarm, the system will check the real time speed when the car is running. If the current speed is higher than the setting speed limited, the tracker will send alarm and location information by SMS to the authorized phone number. If the tracker is triggered continually, every authorized phone will receive max 3 alarm SMS per hour. The over speed alarm SMS is as follow:

Over Speed Alarm, current speed: XXX km/h

After disable the over speed alarm, the system will not check speed again. Also send SMS "CANCELALARM*123456" to the tracker can cancel this alarm setting.

9. Check Alarmsetting

Send SMS "ALARM*123456" to tracker, "ALARM" is a command, "123456" is password, the tracker will send back the information "Shock Alarm: OFF, Move Alarm: OFF, Geo-fence: OFF, Over Speed Alarm: OFF, Power Down Alarm: ON, Alarm calling: ON, Alarm SMS: ON" to indicate all the alarm setting, if the password is not right, the operation is fault, the tracker will send back information "Wrong Password". This command is used for check the tracker alarm setting.

10. Cancel All AlarmSetting

Send SMS "CANCELALARM*123456" to tracker, "CANCELALARM" is a command, "123456" is password, the tracker will send back the information "All Alarmsetting Canceled", this command will cancel all the alarm setting include Shock Alarm / Move Alarm / Geo-fence Alarm / Over Speed Alarm, if the password is not right, the operation is fault, the tracker will send back information "Wrong Password".

11. Monitor Sound in Car

Send SMS "MONITOR*123456*13987654321" to tracker, "MONITOR" is a command, "123456" is password, "13987654321" is the number that the tracker will call back, if the operation is success, the tracker will call back immediately to the number you set (13987654321), user pick up the call and then can hear the voice in car. If the password is not right, the operation is fault; the tracker will send back information "Wrong Password".

■ Platform Operation

The platform operation please refer the platform operation guide, scan the following QR code or click the website link to download the platform manual, visit website www.responsegps.com or www.999gps.net and click the Manual icon also can download the platform manual.



Platform User Guide
Word Version



Platform User Guide
Word Version



iPhone iOS App
Download & Install



Android App
Download & Install

■ Notes:

1. This tracker uses 2G GSM network, and it uploads tracking only through 2G GPRS, it cannot work in CDMA network or 3G (WCDMA or CDMA2000) network. Some 3G card can work in 2G GSM network, then this kind of 3G SIM card can be used in this tracker, please call mobile phone company to confirm the SIM card supports 2G GSM network or not.
2. Please confirm that the SIM card PIN code has been disabled, otherwise the tracker cannot find GSM network, and the Green LED will keep ON.
3. Also please confirm the SIM card has enabled GPRS service (Some SIM card needs to send SMS to enable the GPRS data service), the tracker will cost 20-30M GPRS data every month, ordering a GPRS data package can save money.
4. The antenna of GSM and GPS is built in the tracker, please note that the installation location of the tracker can receive the GPS signal, if the OBD socket location cannot receive GPS, please add an external OBD wire to install the tracker to another place. Please leave away the tracker from big metal, and keep away from magnetic components.
5. The tracker is built with a backup rechargeable Li battery, the battery can be used 1-2 hours after the power supply is disconnected.
6. The tracker is built with GSM and GPS module, so please power off the tracker at the special place that restricts using mobile phones, such as on the plane, etc.
7. The GPS needs 10-200 seconds to locate the position, when the GSM signal is weak or the network is very busy, the SMS may be delayed to send by the GSM network, this is normal.
8. The tracking data on our server will be kept for 6-12 months; the old data will be deleted.

■ Trouble Shooting:

1. The tracker auto power off: please confirm the tracker is installed in the OBD socket firmly.
2. After power on the tracker, the tracker GREEN LED keep on, and it has not any repose, and no ring, please confirm the SIM card has been installed properly, the SIM card PIN code is disable, and the SIM card has enough charge, and the mobile phone can work well in that place. If the tracker work well the Green LED will flash once every 4 seconds.
3. If the tracker cannot upload location to website, please confirm the SIM card has GPRS function, and the APN or GPRS auto configure is right, (Send SMS "CHECK*123456" to check auto configure, and call the mobile phone hot line to confirm APN & GPRS). if the tracker do not move, the tracker will not upload tracking, try moving the tracker.
4. If the tracker cannot send back information by SMS, please confirm the SIM card has ID caller display function and SMS service function, and please read the SMS information of the tracker sending back, and check the instruction & password is right or not.
5. When call the tracker, it has ringing, but it will not hang up the calling, please check the tracker has set the authorized phone number, use the authorized phone call the tracker, or delete the authorized phone number.
6. Cannot login the platform: send SMS to check the ID of the tracker, then try again, if not success please contact your supplier.
7. After go out the underground park, some tracking maybe lost, the GSM and GPS module will take a few minutes to receive signal and re-locate, some tracking maybe lost, this is normal.
8. Some times some location point is lost, this is normal, in the transmit process, some point maybe lost, but this will not happen very often.

■ Specifications:

GSM Module	SIMCOM	GPS Module	u-Blox or MTK
GSM Frequency	850/900/1800/ 1900Mhz(4 Band)	GPS channel	24 channels
GSM / GPS Antenna	Built in	Locate precision	10-20 Meters
GPS Cold Start Time	36 seconds	GPS Hot Start Time	1 second
Working Voltage	9-40V DC	Recharging Current	< 5V/100mA
Standby Current	< 10 mA	Uploading Current	<100mA / 12V
Battery	180mAh	Working Temperature	-20°C to +55°C
Absolute Temperature	-35°C to +70°C	Storage Temperature	-40°C to +80°C

RESPONSE

Distributed by:

TechBrands

Electus Distribution Pty. Ltd.

320 Victoria Rd, Rydalmere

NSW 2116 Australia

Ph: 1300 738 555

Int' l: +61 2 8832 3200

Fax: 1300 738 500

www.techbrands.com